



MARTIN MARINE DEEP COVE REGATTA 2022

SUPPLEMENT to the STANDARD SAILING INSTRUCTIONS (SSI) (Numbering corresponds to the Sailing Instructions (Appendix S))

The notation '[NP]' in a rule of the supplemental sailing instructions (SSIs) means that a boat may not protest another boat for breaking that rule. This changes RRS 60.1(a).

1 RULES

1.2 The rules as stated in the Martin Marine Deep Cove Regatta 2022 Notice of Race (NoR).

1.3 RRS are changed as follows:

- 1.3.1** RRS 60.1 (a) is changed, see notation '[NP]'
- 1.3.2** RRS A5.3 applies.
- 1.3.3** RRS 32 is changed, see SSI 7.4.3
- 1.3.4** RRS 62.1(a) is changed, see SSI 9.4 and SSI 12.4
- 1.3.5** RRS S11.1 is changed, see SSI 11.2.
- 1.3.6** SI 12.3, RRS 35, A5.1, A5.2 and A10 are changed, see SSI 12.6

2 NOTICES TO COMPETITORS

2.3 The online official notice board is located at www.deepcoveyc.com/racing.

2.4 The race office is located at Deep Cove Yacht Club, 4420 Gallant Ave., North Vancouver, BC, V7G-1L2, telephone 604-929-1009, email chair.fleet@deepcoveyc.com.

2.5 Notices to competitors will be posted on the official notice board located in the basement of the Deep Cove Yacht Club.

2.6 On the water, the race committee intends to monitor and communicate with competitors via VHF 73.

4.0 SIGNALS MADE ASHORE

4.2 The signals flagpole is located outside the Deep Cove Yacht Club clubhouse.

- 4.3** When flag AP is displayed ashore, '1 minute' is replaced with 'not less than 60 minutes' in Race Signals AP.

5 SCHEDULE OF RACES

- 5.3** Dates of racing:

Date	All PHRF	All ORC	PHRF Sportboat
September 10	Regatta	Regatta	Regatta
September 11	Distance	Distance	Distance

- 5.4** Number of races:

Class	Rating Rule	Races per day Scheduled and constitute a series	Races per day Maximum Saturday/Sunday
All ORC	TCF	1	5/2
All PHRF	PHRF of BC ToT	1	5/2
PHRF Sportboat	One Design	1	5/2

- 5.5** [NP] At the discretion of the Race Committee, should no races be finished on Saturday, September 10 then the intended 'Regatta' race format, inclusive of 'races per day' may be conducted on Sunday, September 11. The 'Distance' format for Sunday, September 11 would therefore be abandoned.

- 5.6** The scheduled time of the warning signal for the first race each day is 1100 hrs.

- 5.7** On the last scheduled day of racing no warning signal will be made after 1430 hrs.

6 CLASS FLAGS

- 6.2** Divisions will be scored separately though some starts may be combined.

6.3 The class and division flags are:

Division	Pennant	Handicap Rating or Classification
Div 1	pennant 1	ORC GPH Less than 600.0 (see VARC Div 2 definition)
Div 2	pennant 2	ORC 600-640 (also classed as PHRF-BC 60-99)
Div 3	pennant 3	PHRF-BC 100-173
Div 7	pennant 7	PHRF-BC 174-275
Div PHRF Sportboat	pennant 4	PHRF Sportboat Class Rules (see VARC Notice of Race 2022 3.2.1)

7 THE COURSES

7.3 The racing areas are indicated as: - Cates Park Course Area see APPENDIX A and Indian Arm Course Area see APPENDIX B. Refer to Chart 3494 or 3495 for information purposes.

7.4 Cates Park Course Area

The diagram in Appendix A shows the courses to be sailed and the order in which the marks are to be passed. All marks are to be left to port. If Mark 2 is set below the *Start/Finish (S/F)* line the S/F shall not be considered an obstruction and may be transited as necessary.

7.4.1 Last Race Of The Day Special Finish. The Race Committee may relocate the Finish of the Final Race of the Day to the South 5kt Buoy (Special Finish Mark) at the Entrance to Deep Cove. The Race Committee will make an announcement before the start of the Last Race of the Day indicating this and fly Code Flag "S" during the Start Sequence per SSI 10.2. Boats shall sail the usual course indicated, rounding Mark 2 on the final leg, then to the finish at the South 5kt Buoy (Special Finish Mark) at the Entrance to Deep Cove.

7.4.2 For the purposes of the Last Race Of The Day Special Finish, all courses shall deem to be modified to include a rounding of Mark 2 on the final leg as part of the course. This modifies the courses as outlined in Appendix A. For example, if Course "1" is indicated, boats shall sail Start – 1 – 2 – Special Finish and so on for other courses.

7.4.3 Cates Park Area races shall not be shortened, this changes RRS 32.

7.5 Indian Arm Course Area

7.5.1 Appendix B shows the locations of the starting area(s) noted as 'Lone Rock' and 'Twin Island' Start Line(s).

7.5.2 Appendix B shows the approximate location(s) of the Indian Arm Course Area rounding mark(s)/vessel (noted as 'A', 'B' and 'C').

7.5.3 Appendix B shows the approximate location(s) of various potential sites for the Indian Arm Course Area *finish line*, **see SSI 11.5.**

8 MARKS AND OBSTRUCTIONS

8.2 Cates Park Course Area:

8.2.1 Mark 1 and mark 2 will be yellow inflatables, mark 1A will be an orange inflatable.

8.2.2 Mark 2 may be set below the start/finish line.

8.2.3 Last Race of the Day Special Finish mark will be the South 5kt Buoy at the Entrance to Deep Cove.

8.3 Indian Arm Course Area:

8.3.1 The rounding mark shall be rounded to port and be either:

A: an orange inflatable

B: a yellow inflatable

C: a race committee markset vessel holding station and displaying code flag 'M'. [NP] Failure of the markset vessel to hold station shall not be grounds for redress. All effort(s) will be made to remain accurately on station

8.3.2 The Race Committee will attempt to notify the fleet on VHF 73 as to its intended rounding mark and approximate location.

8.4 Mark S/F will be a pin with red shape or flag.

9 THE START

9.3 Boats whose warning signal has not been made shall avoid the starting area during the starting sequence for other races. The starting area is 75 meters from the starting line in all directions.

9.4 If any part of a boat's hull is on the course side of the starting line at her starting signal and she is identified, the race committee will attempt to hail her sail number. Failure to hail her number, failure of her to hear such a hail, or the order in which boats are hailed will not be grounds for a redress for request. This changes RRS 62.1(a).

9.5 A boat that does not start within 4 minutes after her starting signal will be scored Did Not Start without a hearing. This changes RRS A5.1 and A5.2.

9.6 Indian Arm course Area *Start Line* shall be located at either 'Lone Rock' or 'Twin Island' start area. The Race Committee shall announce on VHF 73 which area it intends to utilize. [NP] The RC signal boat may not be securely anchored due to conditions while holding station, failure to accurately hold station shall not be grounds for redress.

10 CHANGE OF THE NEXT LEG OF THE COURSE

10.2 To change the next leg of the course, the race committee will move the original mark or the finishing line to a new position.

11 THE FINISH

11.2 The finishing line is between the orange/red staff/flag on the Race Committee (RC) boat and the S/F mark. This changes RRS 11.1.

11.3 If the race committee is absent when a boat finishes, she shall report her finishing time, and her position in relation to nearby boats, to the race committee at the first reasonable opportunity.

11.4 [DP] A boat that retires from a race shall notify the race committee at the first reasonable opportunity.

11.5 Indian Arm course Area *Finish Line* shall be located at 'Lone Rock' start area or 'Twin Island' start area, or one of the approximate location(s) of the Indian Arm Course Area rounding mark(s)/vessel (noted as 'A', 'B' and 'C'). The Race Committee shall announce on VHF 73 which area it intends to utilize. [NP] The RC signal boat may not be securely anchored due to conditions while holding station, failure to accurately hold station shall not be grounds for redress.

12 TIME LIMITS

12.4 Failure to meet the Target Time will not be grounds for redress. This changes RRS 62.1(a).

12.5 The Race Time Limit (see RRS 35), and the Finishing Window are shown in the table below.

Time Limit	Race Time Limit	Finishing Window
Cates Park Course Area	75 minutes	30 minutes
Indian Arm Course Area	4 hours	60 minutes

12.6 The Finishing Window is the time for boats to finish after the first boat sails the course and finishes. Boats failing to finish within the Finishing Window, and not subsequently retiring, penalized or given redress, will be scored Time Limit Expired (TLE) without a hearing, this changes SI 12.3. A boat scored TLE shall be scored points for the finishing place one more than the points scored by the last boat that finished within the Finishing Window. This changes RRS 35, A5.1, A5.2 and A10.

13 PROTESTS AND REQUESTS FOR REDRESS

13.5 The time will be posted on the official notice board.

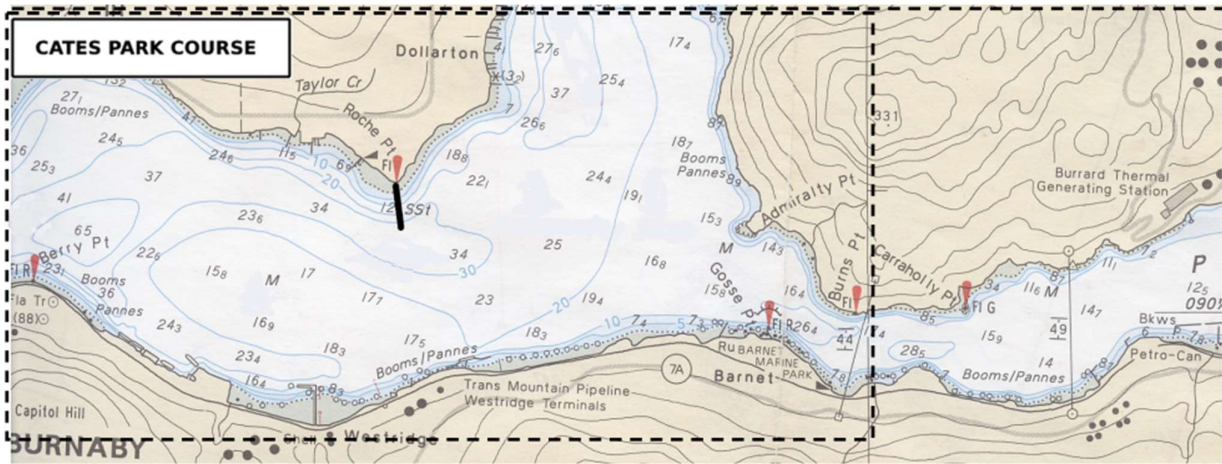
14 OFFICIAL VESSELS

14.1 Official vessels will be identified as follows: RC (Race Committee).

15 RISK STATEMENT

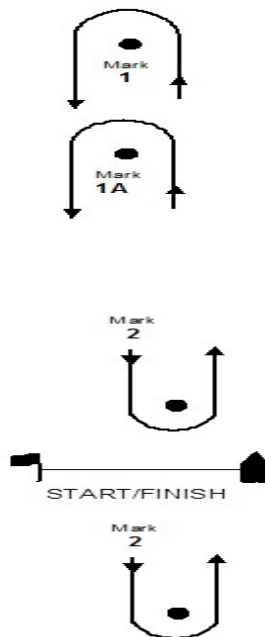
15.1 RRS 3 states: 'The responsibility for a boat's decision to participate in a race or to continue to race is hers alone.' By participating in this event each competitor agrees and acknowledges that sailing is a potentially dangerous activity with inherent risks. These risks include strong winds and rough seas, sudden changes in weather, failure of equipment, boat handling errors, poor seamanship by other boats, loss of balance on an unstable platform and fatigue resulting in increased risk of injury. **Inherent in the sport of sailing is the risk of permanent, catastrophic injury or death by drowning, trauma, hypothermia or other causes.**

APPENDIX A Cates Park Course Area

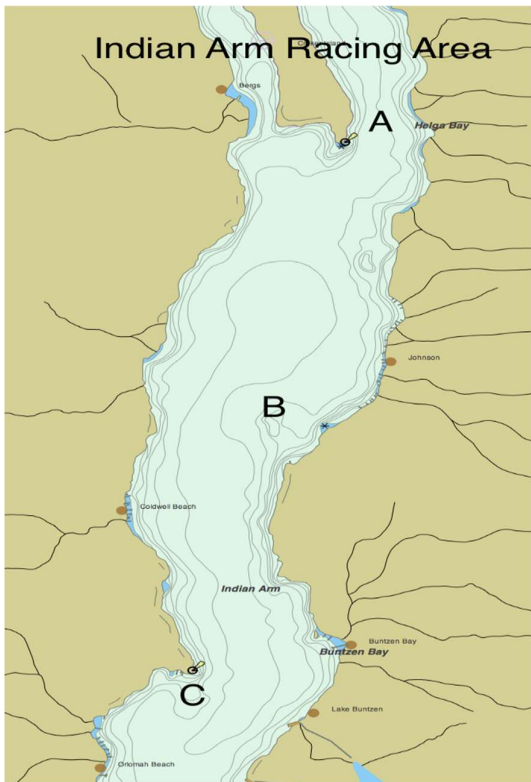
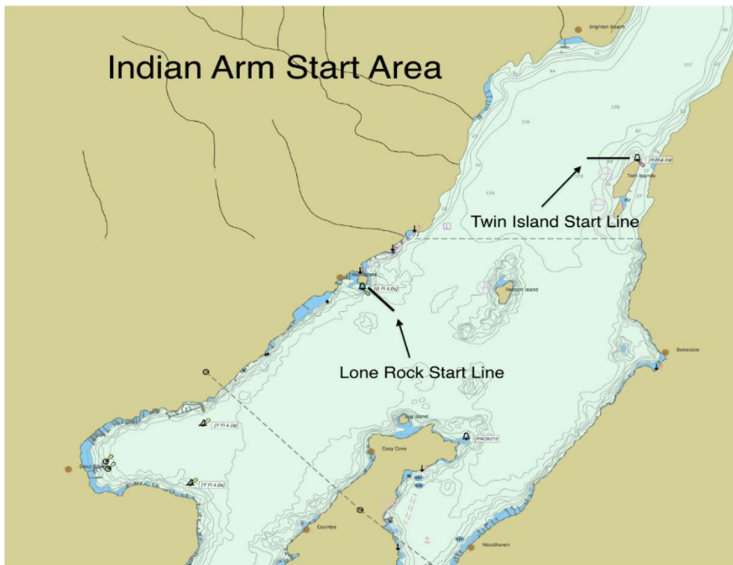


Cates Park Course Area (refer to SSI 7.4, 7.4.1, 7.4.2 and 8.2.3 for Special Finish instructions)

Course Placard	Sequence of Marks
1	Start – 1 - Finish
2	Start – 1 – 2– 1 - Finish
3	Start – 1 – 2– 1 - 2– 1 - Finish
4	Start – 1A - Finish
5	Start – 1A – 2– 1A - Finish
6	Start – 1A – 2– 1A - 2– 1A – Finish



APPENDIX B Indian Arm Course Area



Course Placard Sequence of Marks (see SSI 11.5 for *Finish*)

- 1** Start – A – Finish
- 2** Start – B – Finish
- 3** Start – C – Finish

For information only, not for navigational purposes: -

Deep Cove tides based on Vancouver, in minutes: -

HW time +026 LW time -004

Vancouver

September 10	0542	13.8ft	1225	3.0ft	1908	15.1ft
September 11	0640	13.8ft	1306	3.9ft	1936	15.1ft

Second Narrows currents based on First Narrows, in minutes: -

TtF -018 MF -011 TtE -004 ME -011

First Narrows

September 10	Slk 0610	Max 0946	-4.5	Slk 1303	Max 1621	+4.7
September 11	Slk 0712	Max 1034	-4.2	Slk 1345	Max 1657	+4.3