

Martin Marine

Deep Cove Regatta

September 11th & 12th, 2010

Deep Cove Yacht Club, North Vancouver BC

SAILING INSTRUCTIONS

1. RULES

- 1.1 The regatta will be governed by the rules as defined in *The Racing Rules of Sailing* including the prescriptions of the Canadian Yachting Association.
- 1.2 The ISAF Offshore Special Regulations for Race Category 4, Monohulls, as amended by section 1.4.2 of the Vancouver Area Racing Council 2010 Notice of Race, will apply to PHRF divisions

2. NOTICES TO COMPETITORS

Notices to competitors will be posted on the official notice board located in the basement of the Deep Cove Yacht Club

3. CHANGES TO SAILING INSTRUCTIONS

Any change to the sailing instructions will be posted before 0900 on the day it will take effect, except that any change to the schedule of races will be posted by 2000 on the day before it will take effect

4. SCHEDULE OF RACES

- 4.1 Dates and number of races
The number of races will be dependent on the prevailing conditions
Saturday, September 11 1055 – warning signal for first race
Sunday, September 12 1055 – warning signal for first race
- 4.2 The warning signal for each succeeding race will be made as soon as practicable. Boats are to remain in the starting area until informed that racing is over for the day.
- 4.3 On the last day of the regatta no warning signal will be made after 1400hrs.

5. CHECK-IN

All boats must check in with the Race Committee in person on the dock, or on VHF channel 73 prior to starting.

6. RATINGS, SYSTEMS AND DIVISIONS

6.1 Division	Class Flag
1 - ORC – GPH <590.0	pennant 1
2 - ORC – GPH between 590.1 and 645	pennant 2
3 - PHRF rating of 99-164	pennant 3
6 - PHRF rating of 165-195	pennant 6
7 - PHRF rating of 196-275	pennant 7

All boats are required to fly their division pennant from the backstay.

- 6.2 Divisions will be scored separately though some starts may be combined.
- 6.3 Owners of boats racing in the Keelboat Series under PHRF shall be members in good standing and boats shall have a certificate issued by PHRF of British Columbia or PHRF Northwest. PHRF Northwest ratings will be adjusted by the race committee to ensure consistency with PHRF of British Columbia ratings
- 6.4 Keelboat Series PHRF boats will be scored under a time-on-time system. Elapsed times will be multiplied by the time correction factor shown on the certificate

7. RACING AREAS

- 7.1 The race area is illustrated on the chart in Appendix A. Please refer to chart 3483 or 3311 for navigational purposes.
- 7.2 The Cates Park Course Area will be the primary racing area. Instructions will be provided on VHF channel 73, per instruction 20.2, if the alternate course area is to be used

8. THE COURSES

- 8.1 Cates Park Course Area
 - 8.1.1 The diagram in Appendix B shows the courses to be sailed and the order in which the marks are to be passed. All marks, with the exception of the gate, are to be left to port.
- 8.2 Indian Arm Course Area
 - 8.2.1 The course placard on the committee boat will indicate marks to be rounded in black letters, a red slash on the course placard indicates the start-finish line
 - 8.2.2 The course placard will show the order in which marks are to be passed, and the side on which each mark is to be left, indicated by red diamond for port rounding or green diamond for starboard rounding (See Course chart)
 - 8.2.3 When the course placard indicates the start-finish line as part of the course then boats must pass through the start finish line on the way to the next mark. When the course is to return to the previous mark, the start finish line shall be a gate – meaning that boats must sail between the committee boat and the starting pin and then round either end
 - 8.2.4 When the course placard does not indicate the start-finish line as part of the course then boats shall not pass through the start finish line on the way to the next mark
- 8.3 No later than the warning signal, the race committee will display the approximate compass bearing of the first leg

9. MARKS

9.1 Cates Park Course Area:

- 9.1.1 Mark 1, and the gate mark 2 consisting of 2S and 2P, will be yellow inflatable cylinders, mark 1A will be a yellow inflatable tetrahedron
- 9.1.2 New marks will not be used to change the course, as outlined in instruction 11
- 9.1.3 In the event that either mark 2S or 2P is missing, the remaining mark shall be left to port when rounding

9.2 Indian Arm Course Area:

Mark A: Boulder Island.

Mark B: Raccoon Island. **NB: There are drying rocks Northwest of Raccoon Island.**

Mark C: Yellow inflatable mark, South end of Twin Islands.

Mark D: Yellow inflatable mark, South of Raccoon Island.

Mark E: White 5 Knot Can at the North entrance to Deep Cove. NB: The 5 Knot Can at the South entrance to Deep Cove is not the mark.

Mark F: Yellow inflatable mark, West of Coombe.

9.3 The starting and finishing marks will be a pin with red shape or flag and an orange flag on the Race Committee boat

- 9.3.1 The start/finish line will be in the general vicinity of the Roche Point light at Cates Park, subject to wind direction. Monitor VHF Channel 73 for change of location, alternate start/finish locations can include other areas within Indian Arm of Burrard Inlet of North Vancouver

9.4 In the event of a shortened course, boats must pass between the committee boat signalling the change and the adjacent mark, except at a gate as provided in instruction 12.2

10. THE START

- 10.1 Races will be started by using rule 26 with the warning signal given 5 minutes before the starting signal
- 10.2 The starting line will be between a pin with red shape or flag on the port end and an orange flag on the Race Committee boat at the starboard end
- 10.3 The starting area is 50 meters from the starting line in all directions
- 10.4 After the first warning signal, boats whose warning signal has not been made shall stay clear of the starting area and of all boats whose warning signal has been made
- 10.5 A boat starting later than 4 minutes after her starting signal will be scored Did Not Start without a hearing. This changes rule A4
- 10.6 The race committee will attempt to post sail numbers of OCS boats at the finishing line
- 10.7 Failure of the race committee to post sail numbers of OCS boats shall not be grounds for redress. This changes rule 62.1(a)
- 10.8 During the last one minute of the starting sequence, the race committee will attempt to announce sail numbers of boats on the course side of the starting line on VHF radio channel 73

11. CHANGE OF THE NEXT LEG OF THE COURSE

The race committee will endeavour to maintain the course configuration in the event of changing conditions.

12. THE FINISH

- 12.1 The finishing line will be between a pin displaying a red shape or flag and an orange flag on the race committee boat
- 12.2 When the course is shortened at a gate, boats shall finish by sailing through the gate from the direction of the previous mark

13. PENALTY SYSTEM

Alternate penalty, rule 44.1 is changed so that the Two -Turns Penalty is replaced by the One-Turn Penalty

14. TIME LIMITS AND TARGET TIMES

14.1 Cates Park Course Area

- 14.1.1 The Mark 1 time limit shall be 30 minutes. If no boat has passed Mark 1 within the Mark 1 time limit, the race will be abandoned
- 14.1.2 Target times will be 60 minutes for all classes. Failure to meet the target time will not be grounds for redress. This changes rule 62.1(a).

14.2 Indian Arm Course Area

- 14.2.1 The time limit will be two hours
- 14.3 Boats failing to finish within 30 minutes after the first boat in each division or class sails the course and finishes will be scored Did Not Finish without a hearing. This changes rules 35, A4 and A5

15. PROTEST AND REQUESTS FOR REDRESS

- 15.1 Protest forms are available on the notice board is located in the lower deck hallway near the waterside door. Protests shall be delivered there within the protest time limit
- 15.2 For each division, the protest time limit is 60 minutes after the RC boat has reached the dock after the last race of the day
- 15.3 Notices will be posted no later than 30 minutes after the protest time limit to inform competitors of hearings in which they are parties or named as witnesses
- 15.4 Notices of protests by the race committee or protest committee will be posted to inform boats under rule 61.1(b)
- 15.5 For the purpose of rule 64.3(b) the 'authority responsible' is the measurer appointed by the organizing authority
- 15.6 Breaches of instructions 5, 10.4, 17, and 19.1 will be grounds for a protest only by the race committee. This changes rule 60.1(a). Penalties for these breaches may be less than disqualification if the protest committee so decides

16. SCORING

- 16.1 One race shall constitute a series
- 16.2 A boat's series score will be the total of her race scores, there will be no throwouts
- 16.3 To request correction of an alleged error in posted race or series results, a boat shall complete a scoring enquiry form available at the regatta office

17. SAFETY REGULATIONS

- 17.1 A boat that impedes or obstructs commercial traffic, or sails between a tug and its tow, will be disqualified. The disqualification may be for the race or for the series, at the discretion of the protest committee
- 17.2 A boat which retires from a race shall notify the race committee or an official boat before leaving the course area or, if that is impossible, immediately after arriving ashore
- 17.3 Competitors are reminded of the Fundamental Rules of the RRS: Helping those in Danger, Life-Saving Equipment and Personal Buoyancy, and Decision to Race. Competitors are also reminded of the minimum safety equipment required by law to be carried on all boats, and safe boating practices described in the Safe Boating Guide published by Transport Canada
- 17.4 While racing, a boat shall carry sufficient fuel to motor from the farthest part of the course to the host venue

18. EQUIPMENT AND MEASUREMENT CHECKS

A boat or equipment may be inspected at any time for compliance with the class rules and sailing instructions. On the water, a boat may be instructed by the race committee to proceed immediately to an area designated for inspection at the time of the request

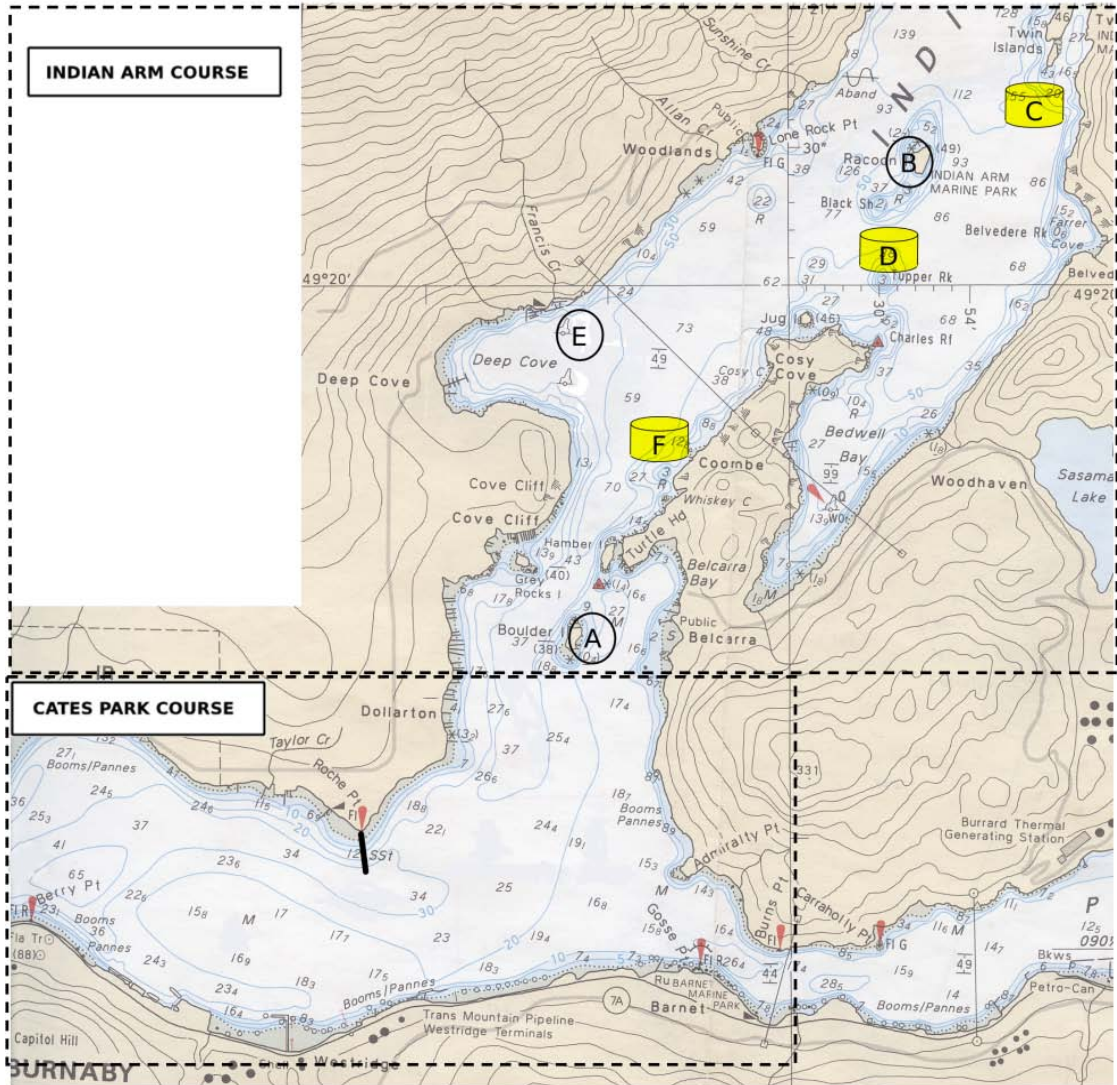
19. RADIO COMMUNICATION

- 19.1 Except in an emergency, a boat shall neither make radio transmissions while racing nor receive radio communications not available to all boats. This restriction also applies to mobile telephone
- 19.2 Race Committee, at their own discretion, may use VHF radio Channel 73 to announce information to competitors. These announcements may include but not be limited to, warning of the start sequence for each class, boats over early, and any other general information for competitors. Radio announcements are a courtesy, failure to make announcements will not constitute grounds for redress

20. DISCLAIMER OF LIABILITY

Competitors participate in the regatta entirely at their own risk. See rule 4, Decision to Race. The organizing authority will not accept any liability for material damage or personal injury or death sustained in conjunction with or prior to, during or after the regatta

APPENDIX "A" – COURSE AREAS



APPENDIX "B" – THE COURSES

Cates Park Course Area

Indian Arm Course Area (refer to Appendix "A")

Course Placard	Sequence of Marks
1	Start – 1 - Finish
2	Start – 1 – 2(gate) – 1 - Finish
3	Start – 1 – 2(gate) – 1 - 2(gate) – 1 - Finish
4	Start – 1A - Finish
5	Start – 1A – 2(gate) – 1A - Finish
6	Start – 1A – 2(gate) – 1A - 2(gate) – 1A – Finish

